



*Premium*  
CHICKEN PRODUCTS



PRODUCT CATALOGUE



“Simply Sufi” is the latest achievement by Sufi Group of Companies in introducing International standard, premium quality chicken products in Pakistan. Simply Sufi has two core elements – 'Simply' and 'Sufi'. 'Simply' means absolutely, clearly, purely. And 'Sufi' refers to the parent brand of the group which stands for quality, purity and trust. Together they produce a beautiful meaning-Simply Pure, which is exactly what you will get from our products; a range of healthy, nutritious and delicious chicken products!

Simply Sufi is the newest feather in the cap of Sufi Group of Companies. Established in 1952, Sufi Group of Companies takes great pride in being a household name throughout Pakistan. With utmost commitment to brand values of quality, purity and trust, Sufi Group of Companies, has championed customer satisfaction and quality assurance and emerged as one of the top market leaders in FMCG industry.



# READY TO COOK PRODUCTS



SPACE NUGGETS



CHICKEN NUGGETS



CHICKEN TENDERS



CHICKEN WINGS

## SIMPLY SUFI READY TO COOK PRODUCTS

Sr No.	PRODUCT NAME	PACKAGING	PCS NO./PACK	WT/PACK (KG)	PACK/CTN
1	SPACE NUGGETS	(S) & (L)	(S) 11-12 PCS (L) 31-33 PCS	(S) 0.275 (L) 0.800	(S) 24 (L) 10
2	CHICKEN NUGGETS	(S) & (L)	(S) 11-12 PCS (L) 39-41 PCS	(S) 0.270 (L) 1.000	(S) 24 (L) 10
3	CHICKEN TENDERS	(S) & (L)	(S) 5-6 PCS (L) 14-16 PCS	(S) 0.225 (L) 0.675	(S) 24 (L) 10
4	CHICKEN WINGS	(L)	(L) 38-48 PCS	(L) 0.850	(L) 10

# READY TO COOK PRODUCTS



XINGER PATTIES



BADAMI KOFTA



CHICKEN SAMOSA



VEGETABLE SAMOSA

## SIMPLY SUFI READY TO COOK PRODUCTS

Sr No.	PRODUCT NAME	PACKAGING	PCS NO./PACK	WT/PACK (KG)	PACK/CTN
1	XINGER PATTIES	(L)	5 PCS	0.550	(L) 16
2	BADAMI KOFTA	(S) & (L)	(S) 9 PCS (L) 23-25 PCS	(S) 0.300 (L) 0.810	(S) 32 (L) 16
3	CHICKEN SAMOSA	(S) & (L)	(S) 15 PCS (L) 30 PCS	(S) 0.210 (L) 0.420	(S) 32 (L) 16
4	VEGETABLE SAMOSA	(S) & (L)	(S) 15 PCS (L) 30 PCS	(S) 0.210 (L) 0.420	(S) 32 (L) 16

**READY  
TO COOK  
PRODUCTS**



**CHICKEN POPPERS**



**PUNJABI SAMOSA**



**POTATO CUTLETS**



**POTATO SAMOSA**

**SIMPLY SUFI READY TO COOK PRODUCTS**

Sr No.	PRODUCT NAME	PACKAGING	PCS NO./PACK	WT/PACK (KG)	PACK/CTN
1	CHICKEN POPPERS	(S) & (L)	(S)22-26 PCS (L)65-80 PCS	(S)0.260 (L)0.780	(S)24 (L)10
2	PUNJABI SAMOSA	SINGLE PACK	10 PCS	(S)0.400	(S)16
3	POTATO CUTLETS	SINGLE PACK	8 PCS	(S)0.500	(S)16
4	POTATO SAMOSA	SINGLE PACK	30 PCS	(S)0.420	(S)16

# READY TO COOK PRODUCTS



**BURGER PATTIES**



**SPICY CHICKEN POPPERS**



**CHICKEN ROLLS**



**VEGETABLE ROLLS**

## SIMPLY SUFI READY TO COOK PRODUCTS

Sr No.	PRODUCT NAME	PACKAGING	PCS NO./PACK	WT/PACK (KG)	PACK/CTN
1	BURGER PATTIES	(S) & (L)	(S) 6 PCS (L) 16 PCS	(S) 0.380 (L) 1.000	(S) 24 (L) 12
2	SPICY CHICKEN POPPERS	(S) & (L)	(S) 22-26 PCS (L) 65-80 PCS	(S) 0.260 (L) 0.780	(S) 24 (L) 10
3	CHICKEN ROLLS	(S)	10 PCS	(S) 0.300	(S) 32
4	VEGETABLE ROLLS	(S)	10 PCS	(S) 0.300	(S) 32

**READY  
TO COOK  
PRODUCTS**



**CHICKEN PARATHA**



**PLAIN PARATHA**



**POTATO PARATHA**

**SIMPLY SUFI READY TO COOK PRODUCTS**

Sr No.	PRODUCT NAME	PACKAGING	PCS NO./PACK	WT/PACK (KG)	PACK/CTN
1	PLAIN PARATHA	(S) & (L)	(S)5 PCS (L)20 PCS	(S)0.400 (L) 1.600	(S)24 (L)6
2	CHICKEN PARATHA	(S)	3 PCS	(S) 0.330	(S) 24
3	POTATO PARATHA	(S)	3 PCS	(S) 0.360	(S) 24

# KABAB RANGE



SEEKH KABAB



GOLA KABAB



SHAMI KABAB



CHAPLI KABAB



RESHMI TIKKA

## SIMPLY SUFI KABAB RANGE

Sr No.	PRODUCT NAME	PACKAGING	PCS NO./PACK	WT/PACK (KG)	PACK/CTN
1	SEEKH KABAB	(S) & (L)	(S) 7 PCS (L) 18 PCS	(S) 0.205 (L) 0.540	(S) 32 (L) 16
2	SHAMI KABAB	(S) & (L)	(S) 7 PCS (L) 17 PCS	(S) 0.252 (L) 0.612	(S) 24 (L) 10
3	CHAPLI KABAB	(S) & (L)	(S) 4 PCS (L) 12 PCS	(S) 0.296 (L) 0.888	(S) 32 (L) 16
4	GOLA KABAB	(S) & (L)	(S) 9 PCS (L) 23 PCS	(S) 0.200 (L) 0.515	(S) 32 (L) 16
5	RESHMI TIKKA	(L)	(L) 20-24 PCS	(L) 0.515	(L) 16



# ECONOMY SAVER POLYBAGS



BURGER PATTIES



CHICKEN NUGGETS

## SIMPLY SUFI ECONOMY SAVER POLYBAGS

Sr No.	PRODUCT NAME	PACKAGING	PCS NO./PACK	WT/PACK (KG)	PACK/CTN
1	BURGER PATTIES	POLYBAG	15 PCS	1.000	12
2	CHICKEN NUGGETS	POLYBAG	38-42 PCS	1.000	10

**READY  
TO EAT  
PRODUCTS**



PLAIN NAAN



ROGHNI NAAN

**SIMPLY SUFI READY TO EAT PRODUCTS**

Sr No.	PRODUCT NAME	PACKAGING	PCS NO./PACK	WT/PACK (KG)	PACK/CTN
1	PLAIN NAAN	(S)	5 PCS	0.425	20
2	ROGHNI NAAN	(S)	3 PCS	0.450	20

# RAW CHICKEN



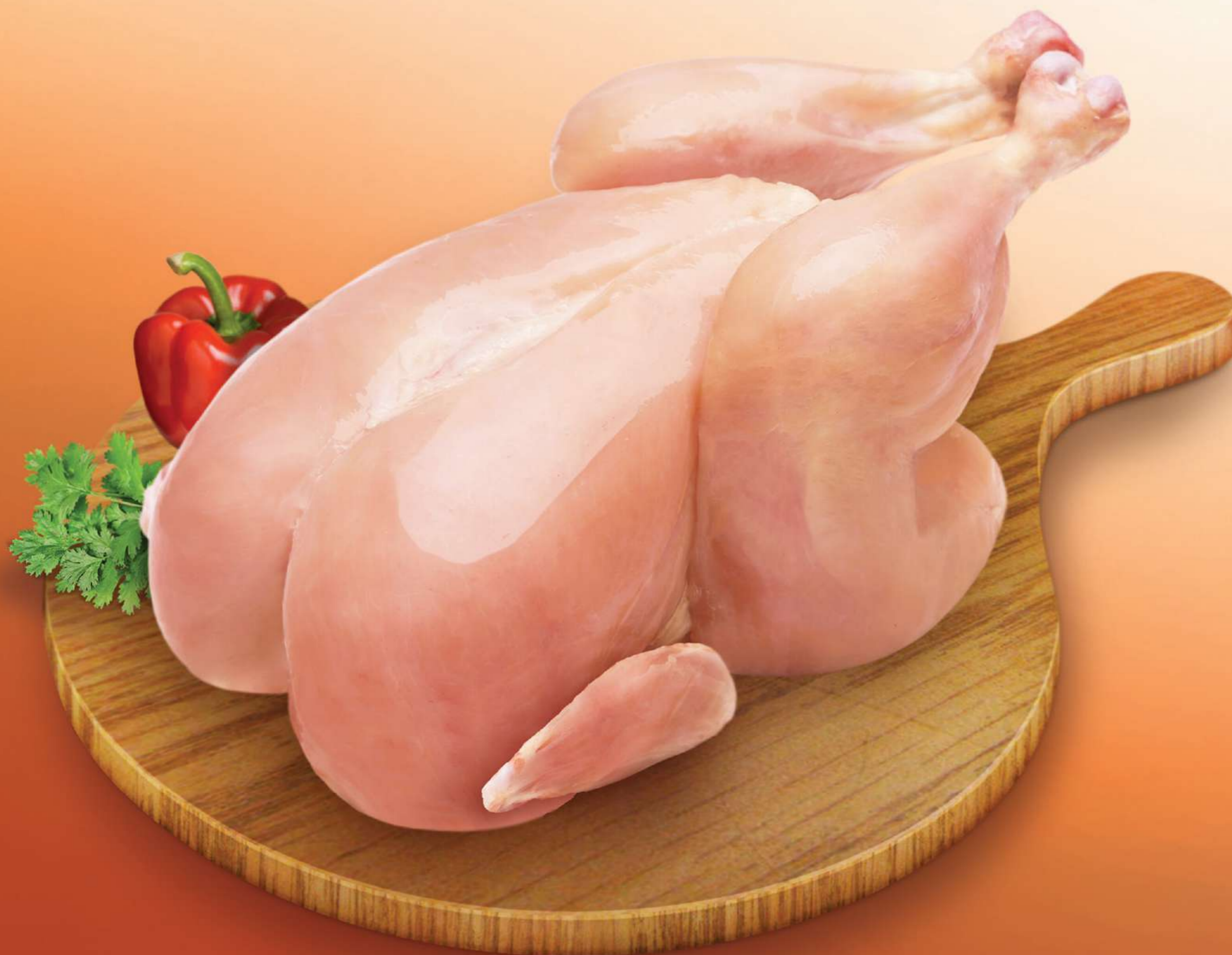
WHOLE CHICKEN  
WITH SKIN



WHOLE CHICKEN  
WITHOUT SKIN



CHICKEN  
WINGS



# RAW CHICKEN



## SIMPLY SUFI RAW CHICKEN

Sr No.	PRODUCT NAME	PACKAGING	PCS NO./PACK	WEIGHT OF PIECE	PACK/CTN
1	SKINLESS BONELESS THIGH	500 GM	7-9 PCS	60-80 GM	20
2	BREAST FILLET	500 GM	4-5 PCS	90-110 GM	20
3	BONELESS HANDI	500 GM	18-22 PCS	20-30 GM	20
4	KARAHI CUT	1KG	12-14 PCS	80-90 GM	10
5	PREMIUM QEEMA	500 GM	N/A	N/A	20

# RAW CHICKEN



**WHOLE CHICKEN WITH SKIN**



**BONELESS THIGH**



**CHICKEN WINGS**



**DRUMSTICKS**



**WHOLE CHICKEN WITHOUT SKIN**

## SIMPLY SUFI RAW CHICKEN

Sr No.	PRODUCT NAME	PACKAGING	PCS NO./PACK	WEIGHT OF PIECE	PACK/CTN
1	CHICKEN WINGS	1KG	13-16 PCS	65-80 GM	10
2	BONELESS THIGH	500GM	7-9 PCS	60-80 GM	20
3	WHOLE CHICKEN WITH SKIN	1KG	1 PC	1KG	11
4	WHOLE CHICKEN WITHOUT SKIN	1KG	1 PC	1KG	11
5	DRUMSTICKS	1KG	8-10 PCS	90-110 GM	10



## Hamza Foods Private Limited

1-B, Garden Block, Garden Town, Lahore Pakistan

T: +92-42-111 100 786 | F: 92-42-35866295 | E: info@sufigroup.biz

[www.simplysufi.com](http://www.simplysufi.com)   